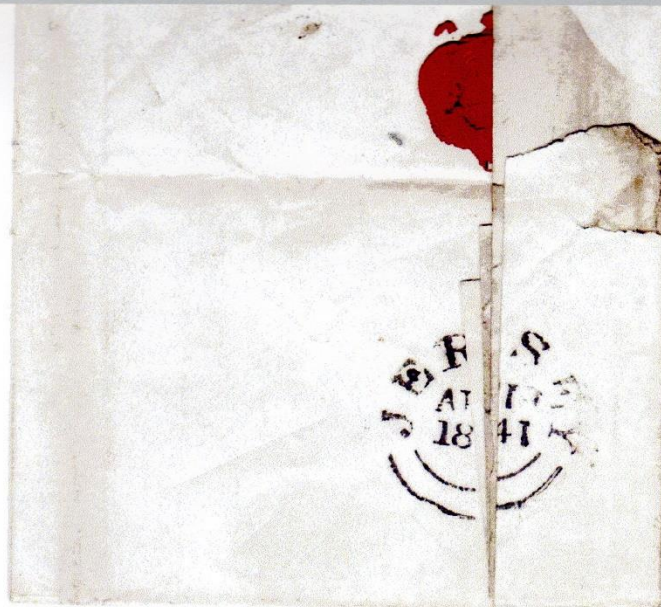


JERSEY – British Post Office

Postal Markings – First Type

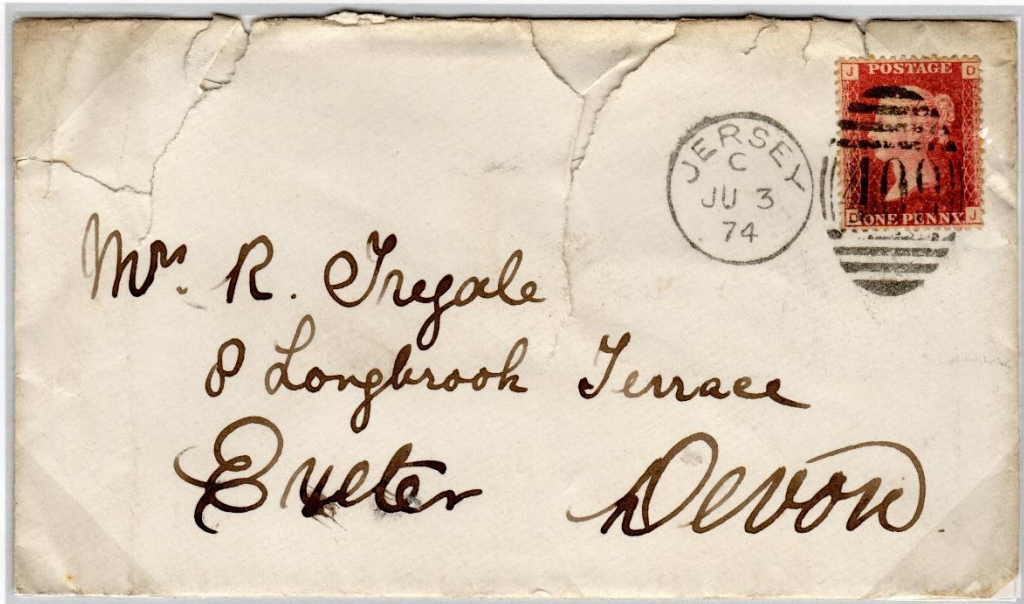
Introduced in 1830 and known as “the improved steel date stamp” is found struck in black up to 1843 and in red up to 1845. The example shown below is struck on the rear of the entire as a dispatch mark with the Launceston mark struck on the face as an arrival mark.



JERSEY – British Post Office

Postal Markings – Numeral Obliterators

These come in a variety of shapes and sizes all with the number 409 indicating JERSEY included, shown are some examples.



This letter despatched from JERSEY has an EXETER arrival mark on the rear (shown right).



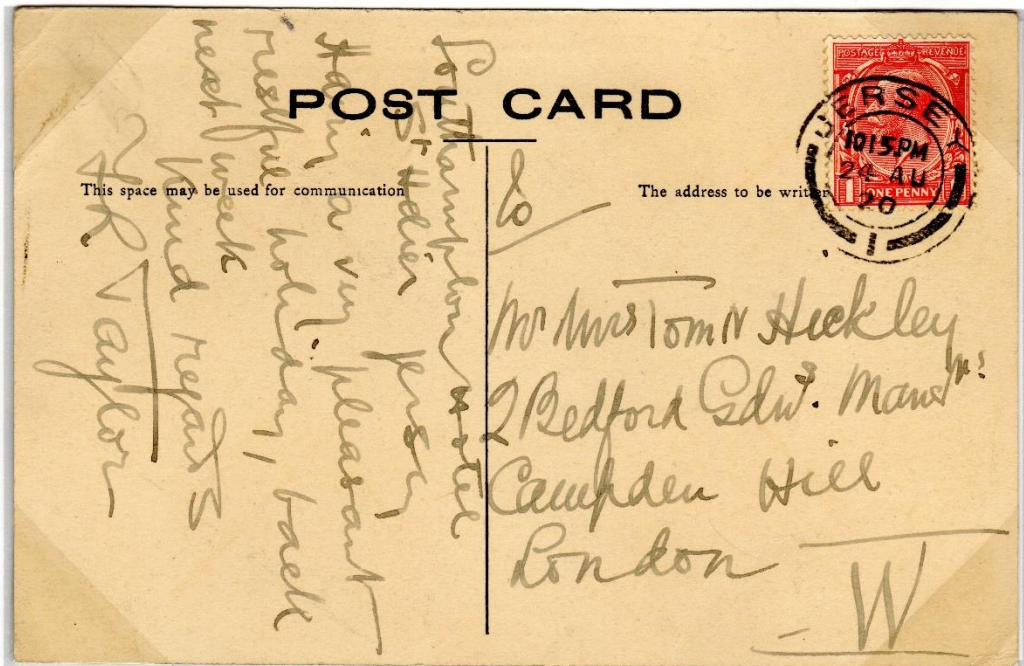
JERSEY – British Post Office

Postal Markings – Single & Double Circle Types

Single circle types appeared first around 1858, the type shown below were in use during the period 1870 to the 1930's



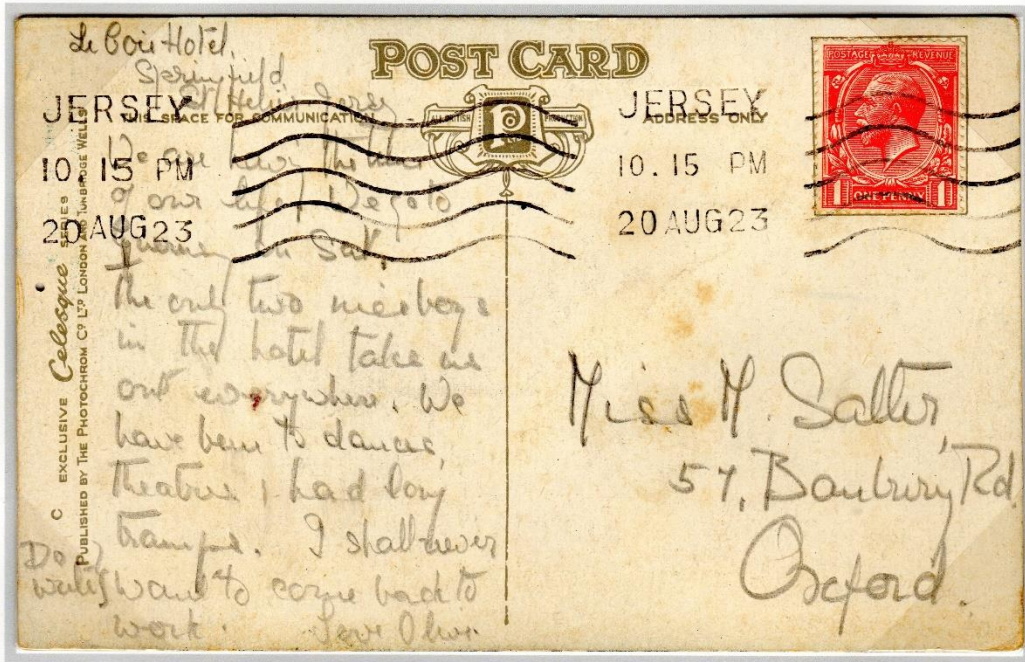
Double circle stamps were introduced in 1896 the type below was introduced in 1906 the earlier type has a cross instead of the 1 on this type.



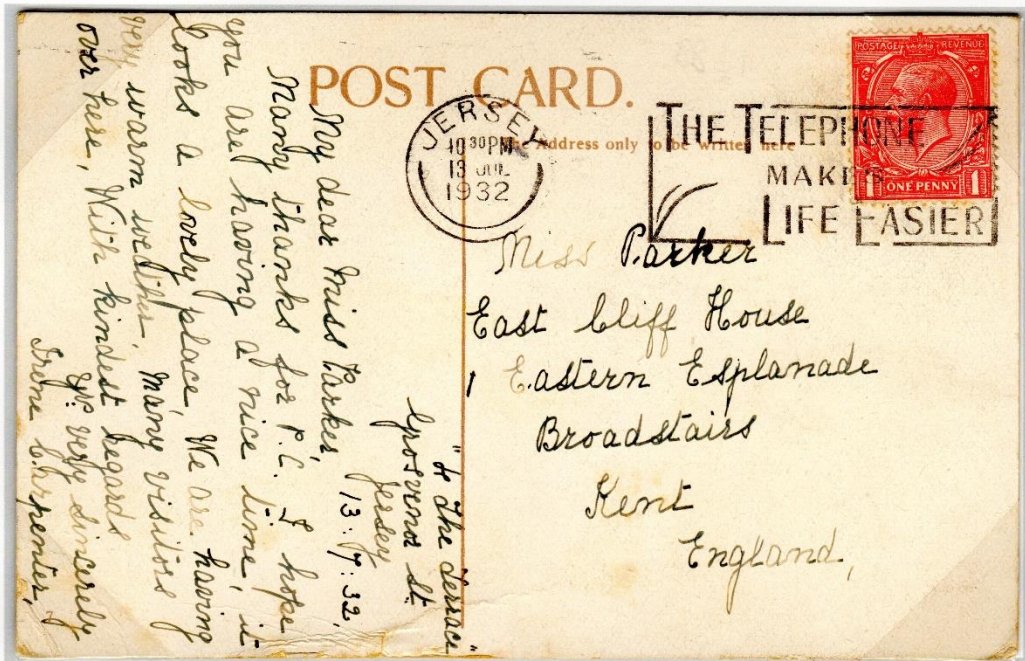
JERSEY – British Post Office

Postal Markings – Machine Types

The first machine cancel a Krag Type was introduced in 1923, the cover below is from the first year of use, this type continued until 1928.



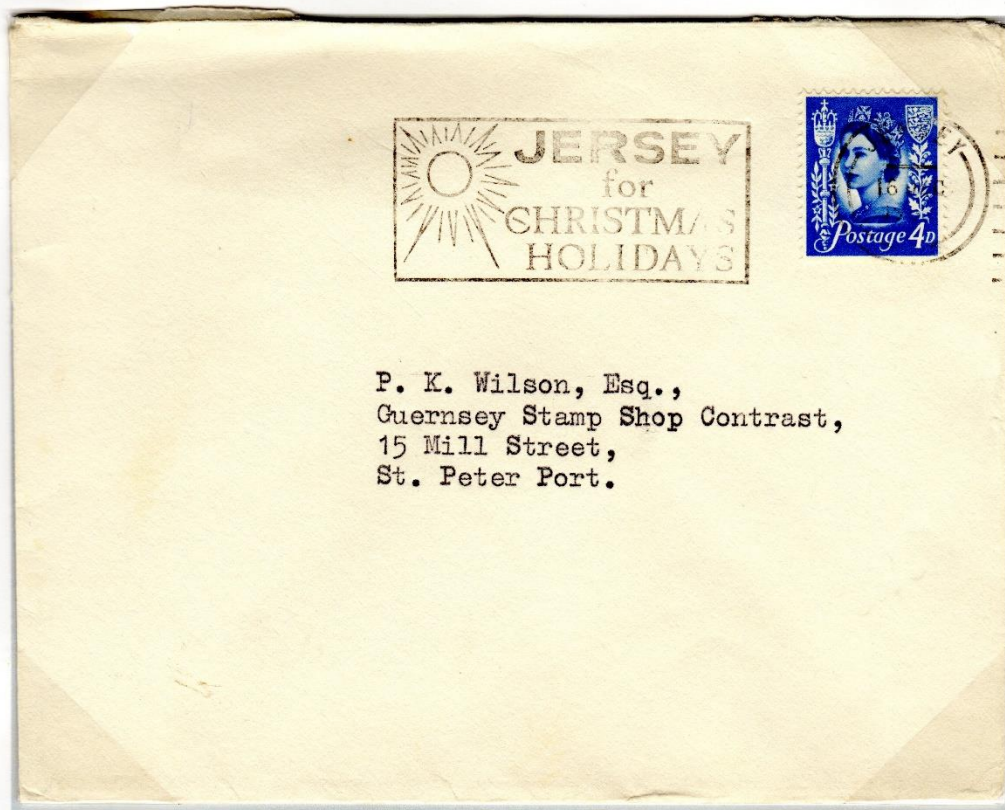
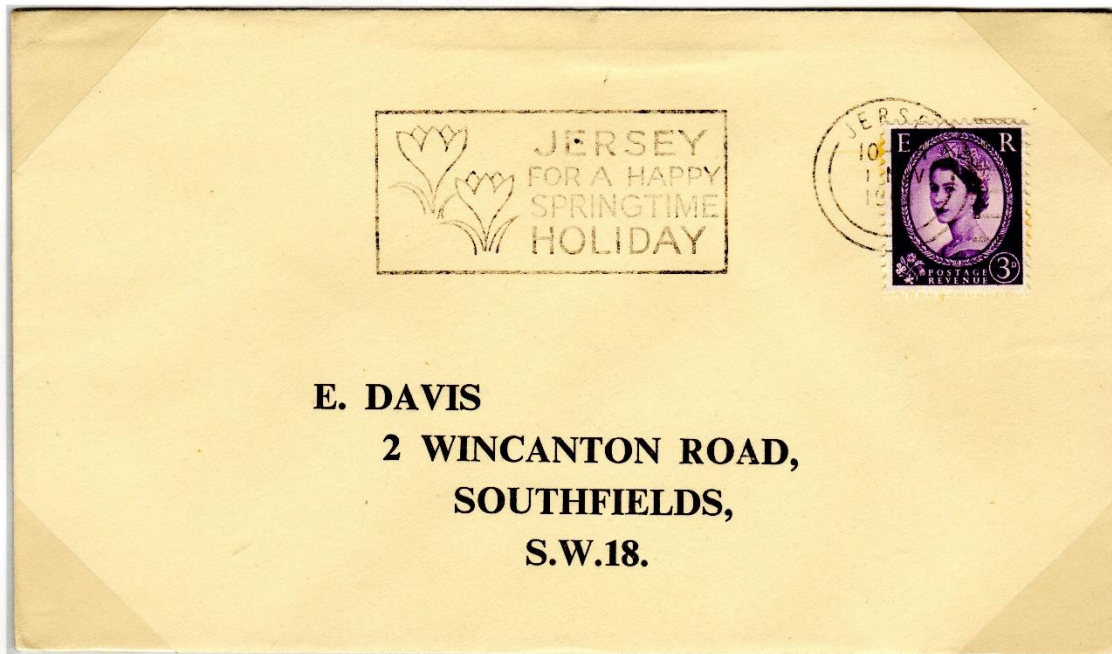
Slogan machine cancels were introduced in 1931, that show below was used in 1932 and is thought to have remained in use for about a year.



JERSEY – British Post Office

Postal Markings – Machine Types

Slogan Cancels advertising the island appeared in various forms.



JERSEY – British Post Office

Overseas Mail – Incoming

Mail from France to a Jersey address which is postage underpaid. The 1d underpaid mark has been applied (409 indicates this has been applied in Jersey).

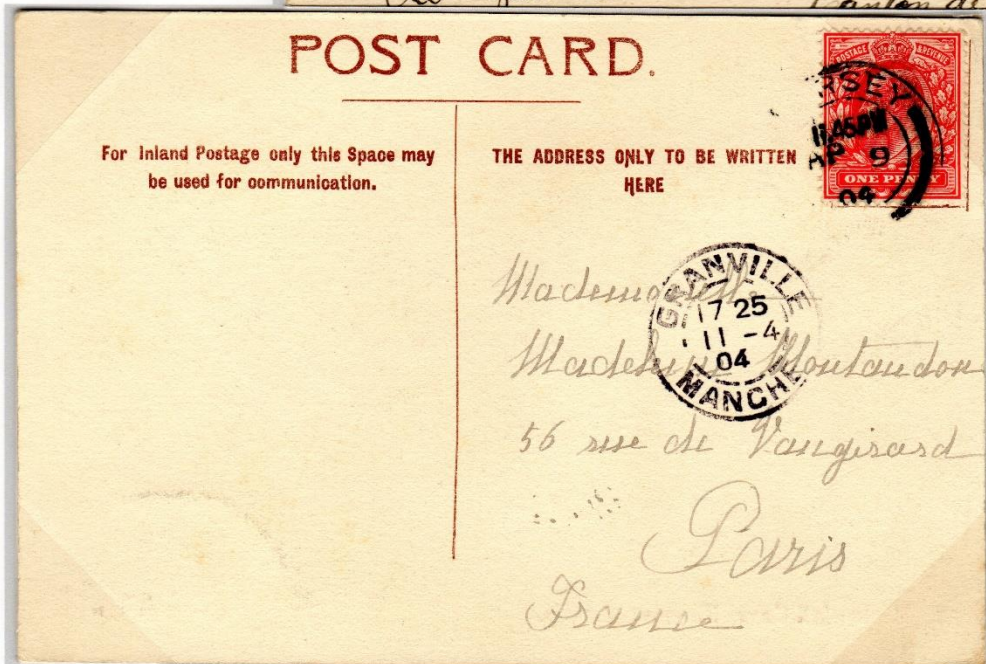


The Carteret Manche mark is the French despatch mark, the original cancellation mark cannot be determined..

JERSEY – British Post Office

Overseas Mail – Outgoing

Mail to France all carrying various Manche receiving marks.



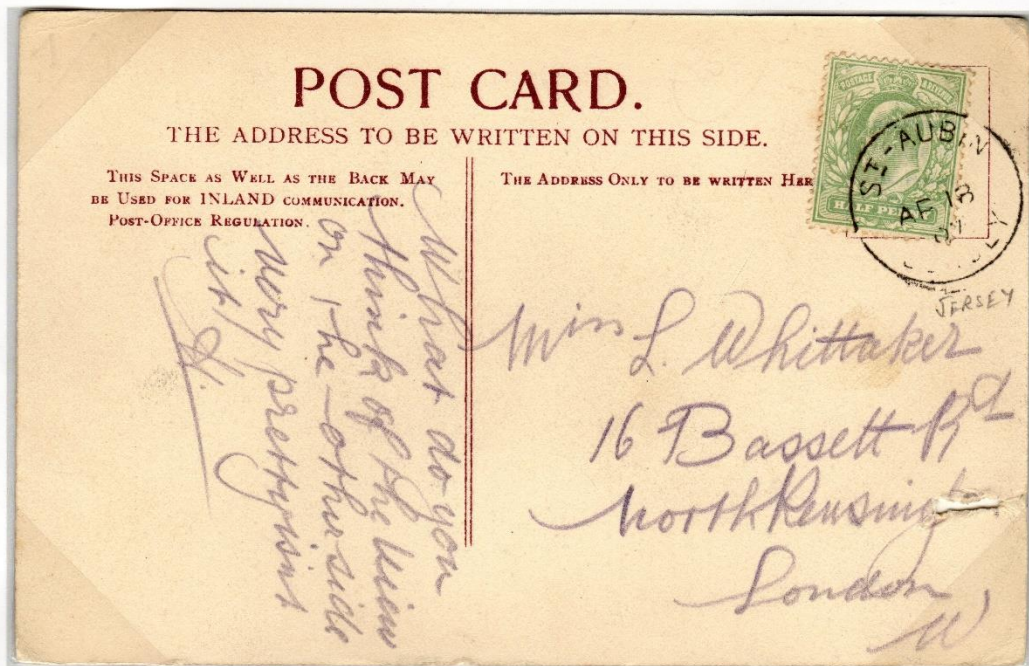
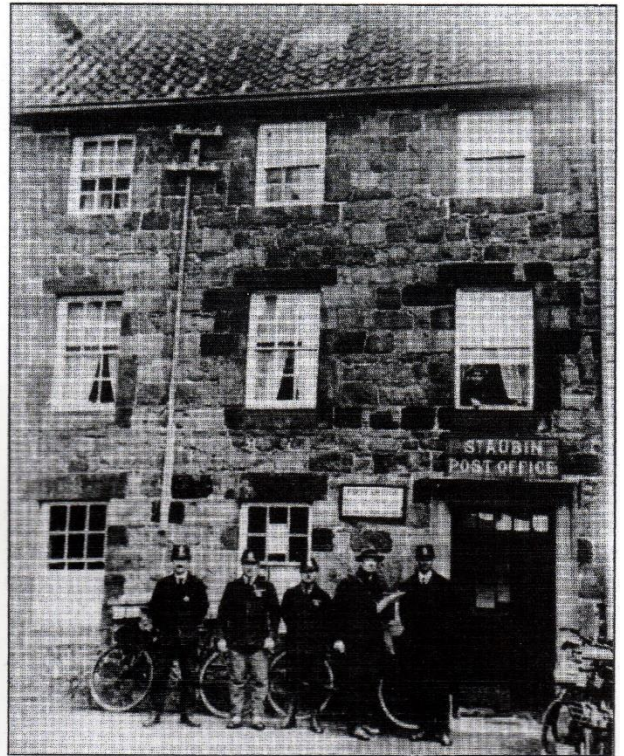
All cards carry the original double ring Jersey cancel denoted by the cross at the base.

JERSEY – British Post Office

Sub-Post Offices & their Postmarks

St Aubin

A Penny Post was operated from this post office as early as 1830. The cancel shown here was introduced during the early 1900's and is known in this form from around 1903 earlier hand stamps carried the wording ST AUBINS.



JERSEY – British Post Office

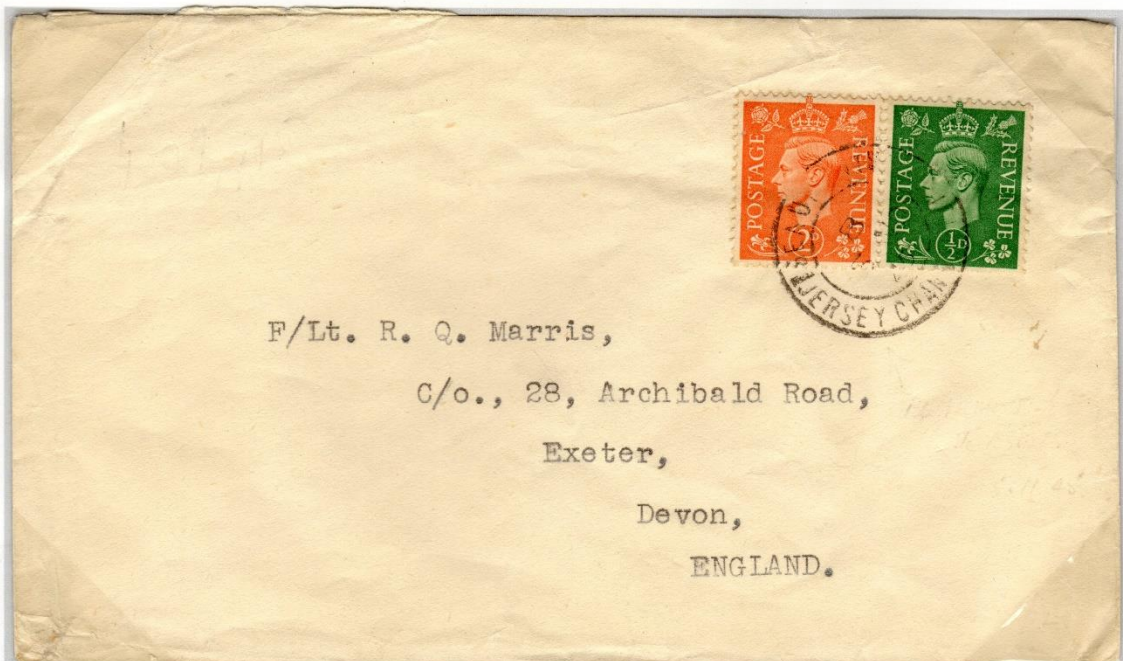
Sub-Post Offices & their Postmarks

Beaumont

Opened as a receiving house for letters in 1853.

The second type of date stamp to be issued for dispatch of mail is shown, this is known with and without code letter A. Introduced in the 1890's this cancel is believed to have lasted until the early 1930's

Below is the later double ring type that replaced the single ring types in all the Sub-Post Offices.



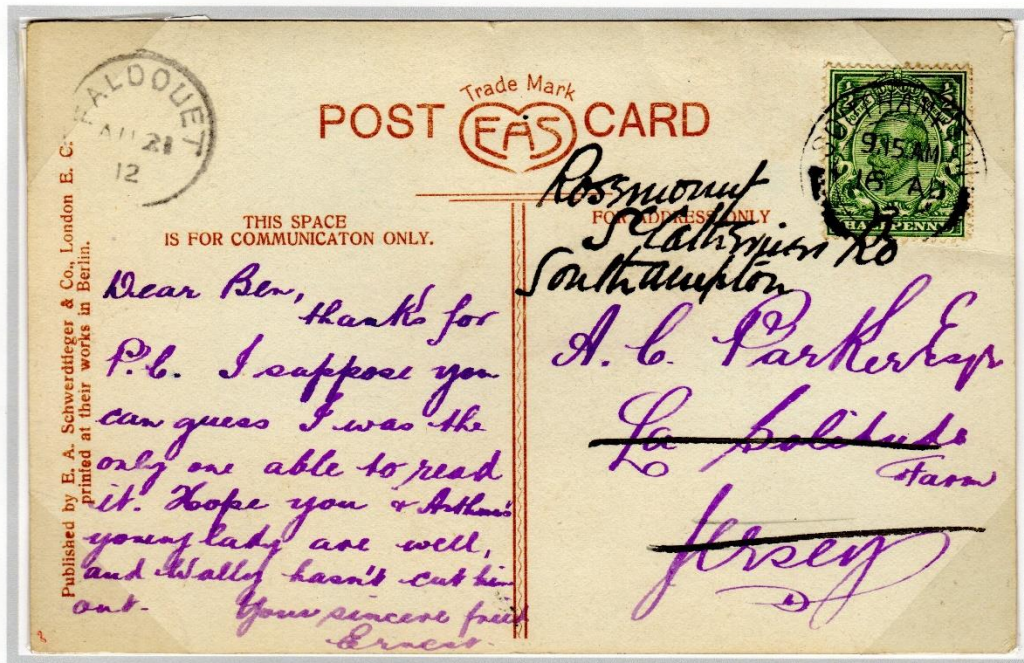
JERSEY – British Post Office

Sub-Post Offices & their Postmarks

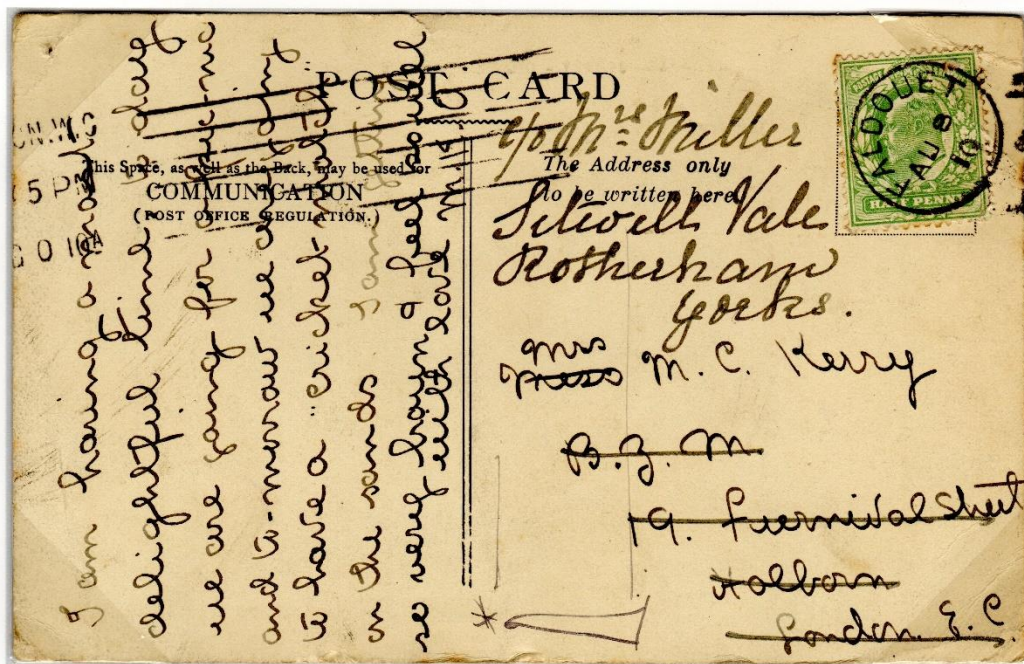
Faldouet

Opened in 1893 as a country post office. The business of this small office is stated to be restricted to postal matters and the issue of postal orders only.

The small 20mm cancel is known with and without a code letter C. Its use on mail is regarded as less common.



The card above has been posted to Jersey from Southampton and been re-directed back to Southampton with the FALDOUET cancel being applied in the process.



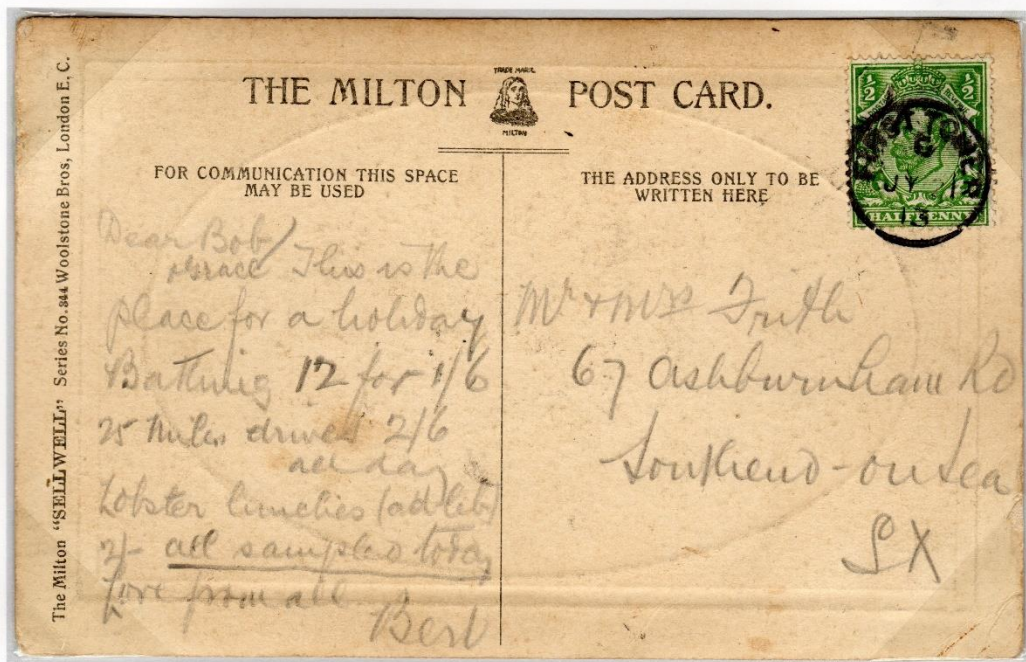
The card above started its journey in FALDOUET but like the top card was re-directed, this time from London to Rotherham.

JERSEY – British Post Office

Sub-Post Offices & their Postmarks

First Tower

A town office was open in 1885 using the small 19mm cancel shown, used up to 1914 when it was either lost or broken. After a short period of the use of a skeleton cancel it was replaced by a similar 19mm cancel that was then used up to the 1930's



The above is an example of use of the original cancel issued to this office.

JERSEY – British Post Office

Sub-Post Offices & their Postmarks

La Rocque

This country post office was opened in 1894, the 24mm hand stamp shown was issued and used up until the early 1930's.

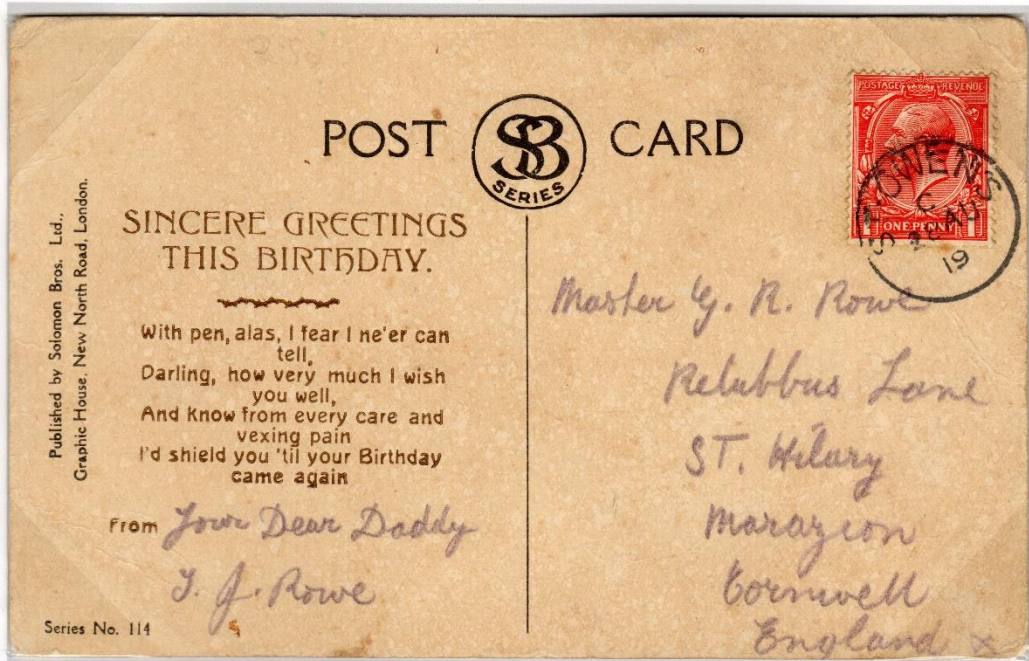
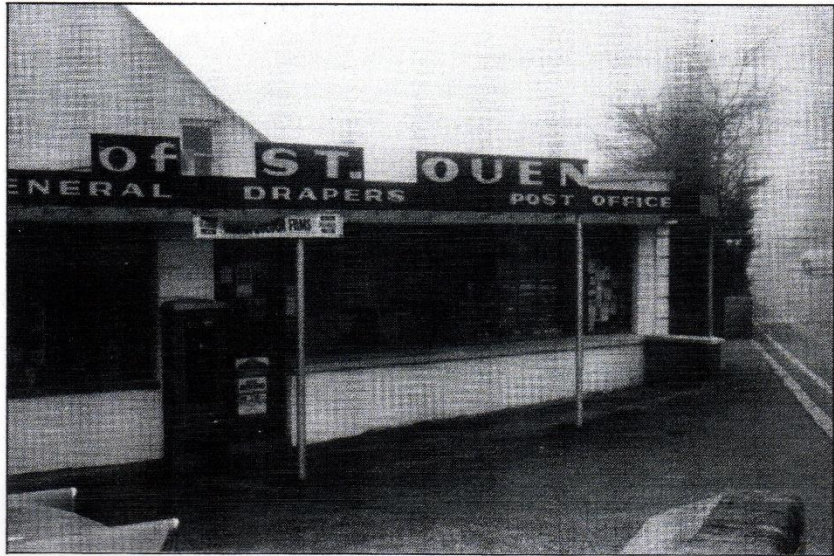


JERSEY – British Post Office

Sub-Post Offices & their Postmarks

St Ouen's

Opened as a receiving house in 1852. The hand stamp shown was introduced in 1874 (*note the wording is incorrectly spelt*). A similar hand stamp was issued in 1882 with the correct wording ST OUENS. Despite this the earlier hand stamp still continued to be used. This hand stamp is also known used with a code letter A.

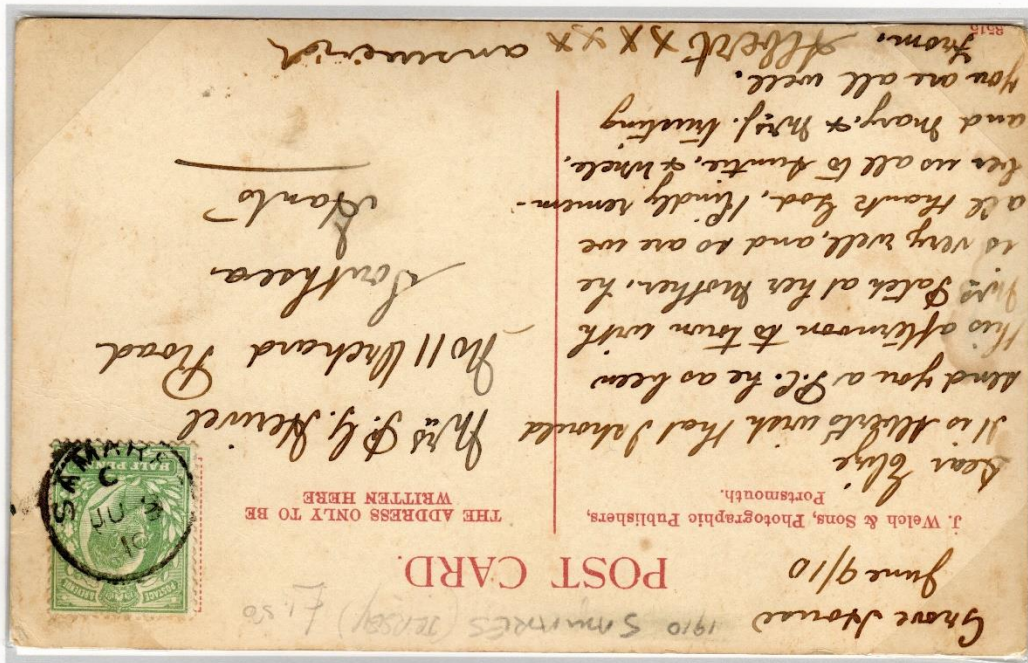


JERSEY – British Post Office

Sub-Post Offices & their Postmarks

St Mary's

A receiving house was opened here in 1853. In 1886 a 29mm rubber date stamp was issued (see below), examples of its use are rare. During the 1880's the 25mm single ring date stamp was issued and remained in use until the 1930's. The cancel was used for both receipt and dispatch and in the 1930's is known used with the code letter B.

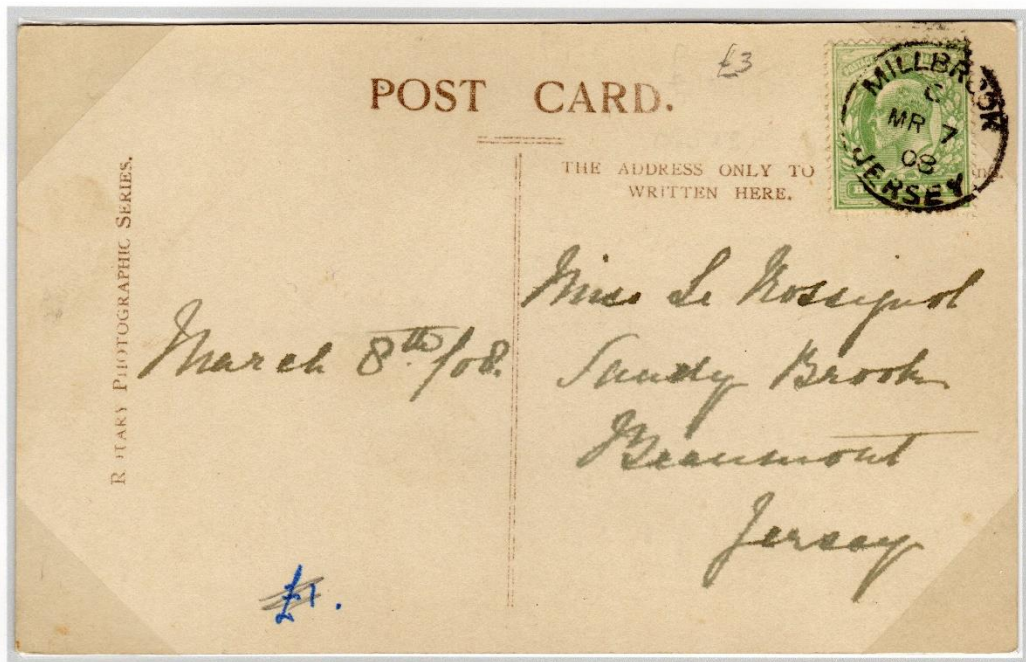
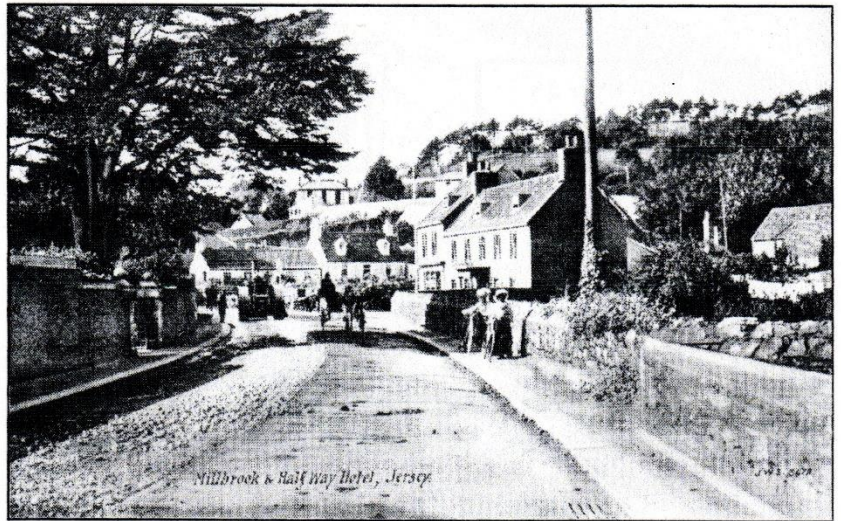


JERSEY – British Post Office

Sub-Post Offices & their Postmarks

Millbrook

A receiving house was opened here in 1851. Local delivery of letters started in 1864. The cancel shown is the third to be issued to this office in 1886 and its use continued until the 1930's. The cancel is also known being used without the code letter C.



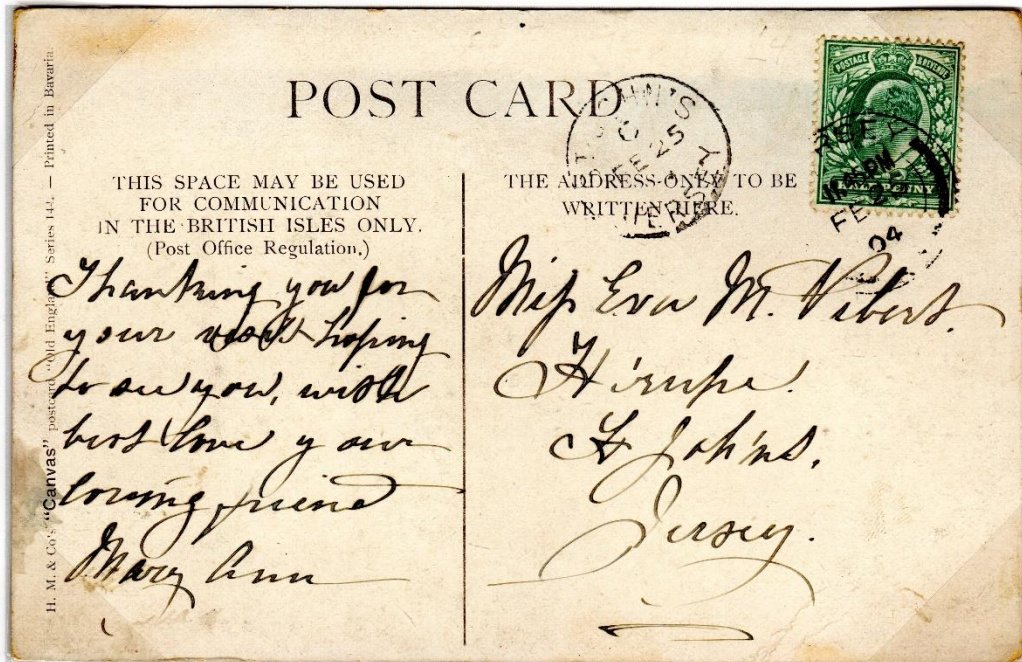
A slightly unusual use of a postcard to a local address.

JERSEY – British Post Office

Sub-Post Offices & their Postmarks

St John's

This office was opened around 1853 as a receiving house. The single circle date stamp shown was introduced in 1881 and was used as both a receiving and dispatch mark up until the 1930's.



Note – the card has been locally posted and has initially been cancelled with the Jersey double ring cancel and the St Johns cancel has been used as a receiving mark.

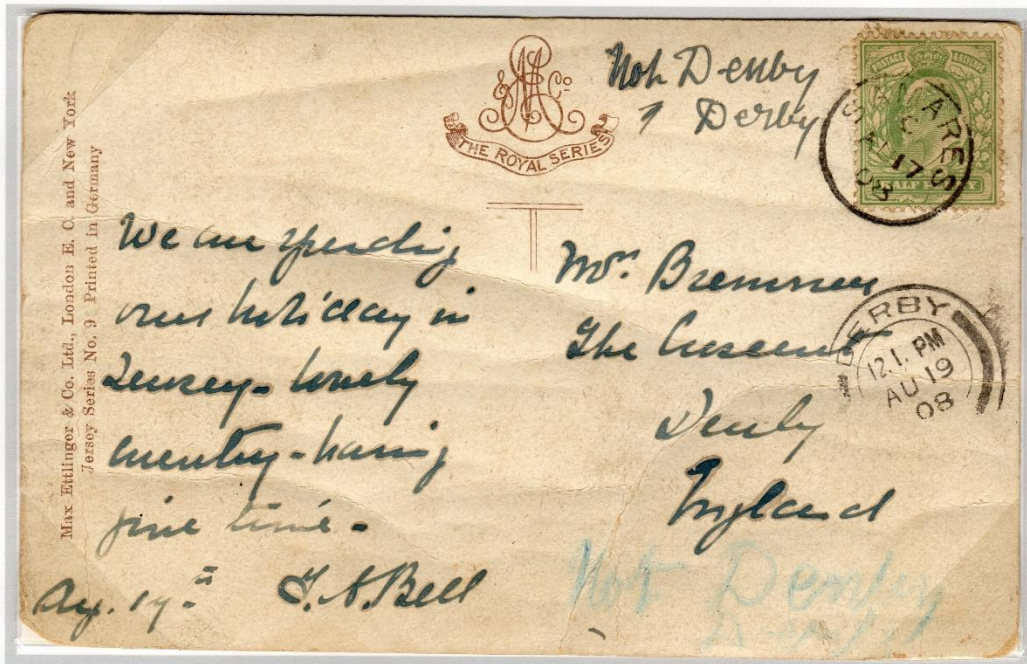
JERSEY – British Post Office

Sub-Post Offices & their Postmarks

Samares

Opened as receiving hose in 1887 the small 21mm date stamp was used as both a receiving and dispatch mark.

The stamp is also known with the code letter A in the 1880's and during the 1920's with no code letter.



Note – the card has been incorrectly addressed and has been marked by hand as – NOT DENBY DERBY in both ink and blue pencil.